

Bloomberg

Flat Panel

Technical Information

FPI500 - 19 ES

Description

Your Bloomberg 19-inch Flat Panels are high-quality display devices that are versatile and ergonomically designed. They have two independent screen panels attached to a space frame and column.



Features

- The Bloomberg 19-inch Flat Panel operates in VGA, SVGA, XGA, and SXGA display modes at 60Hz.
- The Bloomberg 19-inch Flat Panel features high display quality: high contrast ratio, wide-viewing angle and high-speed response.
- The Bloomberg 19-inch Flat Panel provides 16.2 million colors and automatically adjusts itself to all supported video resolutions. To obtain the best fidelity, it is strongly recommended that the computer be set to 60Hz, 32-bit color, and 1280 x 1024 (SXGA) screen resolution.
- To save energy, the Flat Panel will automatically enter stand-by mode within a specified time of inactivity. Moving a pointing device or pressing a key can activate the screen. This feature is only active if the unit is connected to a host that supports display power management.
- Displays can be adjusted to provide optimal viewing angles.
- The Bloomberg Flat Panel connects directly to a Bloomberg-ready PC.
- Data and images can be displayed on the two Flat Panels in a virtual-display format. Using a pointing device, either a single image or multiple-window application may be spread across the physical boundaries of each flat panel's desktop area.
- The Bloomberg Flat Panel requires no routine maintenance.
- To clean the polished chrome, painted plastic, and LCD protective lens, wipe with a soft clean cloth moistened with a glass cleaner or isopropyl alcohol.
NOTE: Do not spray cleaner directly on unit.
- To clean the satin chrome base, wipe with a soft clean cloth.
NOTE: Do not use glass cleaner or isopropyl alcohol to clean the base.

Configurations

The Bloomberg 19-Inch Flat Panel is currently shipped pre-configured horizontally. The unit is leased for specific installation of the BLOOMBERG PROFESSIONAL[®] service. The end user is strictly prohibited from moving Bloomberg-supplied hardware from one computer to another. Only Bloomberg-authorized personnel can move or reconfigure the unit. The unit can be used only with Bloomberg-authorized hardware, software, and cables.

On-Screen Display (OSD) Controls

- You can access the OSD menu through the three buttons located on the bottom left side of each flat panel. Figure 2 displays the layout of the buttons.



Figure 2: Flat Panel buttons

These are multi-function buttons. The use of each button changes depending on the current state of the flat panel. When the OSD is not on the screen, the button on the right powers the unit. The left and center buttons bring up the OSD Main Menu when they are pressed.



MAIN MENU



BRIGHTNESS



CONTRAST

Use the center and left buttons to move between items on the menu, and the right button to select the item that is currently highlighted.

- Brightness – adjust screen brightness
- Contrast – adjust screen contrast
- Position – screen position menu
- Setup – OSD position and language control
- Exit – close OSD

Note: On Energy Efficient models, Bloomberg logo will light when video is displayed, and will be OFF when no video is present.

FRANKFURT +49 69 9204 1210 HONG KONG +852 2977 6000 LONDON +44 20 7330 7500 NEW YORK +1 212 318 2000 SAN FRANCISCO +1 415 912 2960 SÃO PAULO +55 11 3048 4500 SINGAPORE +65 6212 1000 SYDNEY +612 9777 8600 TOKYO +81 3 3201 8900  Press the <HELP> key twice for instant live assistance.

The BLOOMBERG PROFESSIONAL service, BLOOMBERG Data and BLOOMBERG Order Management Systems (the "Services") are owned and distributed locally by Bloomberg Finance L.P. ("BFLP") and its subsidiaries in all jurisdictions other than Argentina, Bermuda, China, India, Japan and Korea (the "BLP Countries"). BFLP is a wholly-owned subsidiary of Bloomberg L.P. ("BLP"). BLP provides BFLP with all global marketing and operational support and service for the Services and distributes the Service either directly or through a non-BFLP subsidiary in the BLP Countries. The Services include electronic trading and order-routing services, which are available only to sophisticated institutional investors and only where the necessary legal clearances have been obtained. BFLP, BLP and their affiliates do not provide investment advice or guarantee the accuracy of prices or information in the Services. Nothing on the Services shall constitute an offering of financial instruments by BFLP, BLP or their affiliates. BLOOMBERG, BLOOMBERG PROFESSIONAL, BLOOMBERG MARKETS, BLOOMBERG NEWS, BLOOMBERG ANYWHERE, BLOOMBERG TRADEBOOK, BLOOMBERG TV, BLOOMBERG TELEVISION, BLOOMBERG RADIO, BLOOMBERG PRESS and BLOOMBERG.COM are trademarks and service marks of BFLP, a Delaware limited partnership, or its subsidiaries.

Adjustments

Once the flat panels are put in place on a desk, you may want to adjust the viewing angle of the flat panels to fit your viewing preferences.

To book a flat panel to the left or right, secure the flat panel with one hand at a bottom corner of the flat panel and push or pull with the other hand at the outside edge of the flat panel. Figure 3 demonstrates how to book a flat panel and where your hands should be positioned on the flat panel.

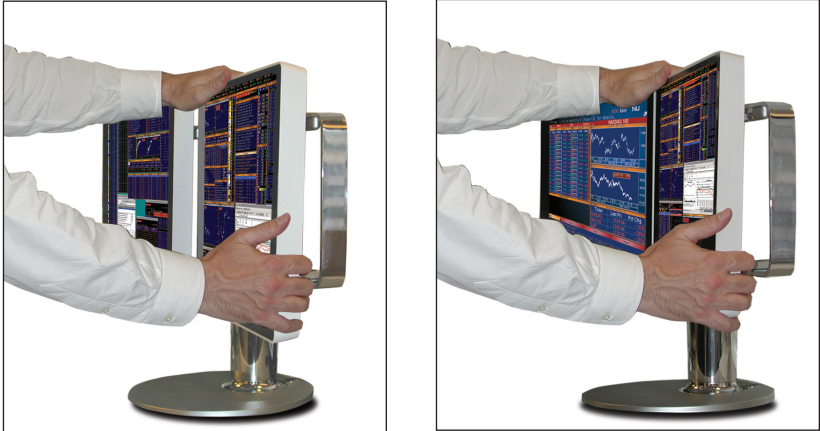


Figure 3: Booking a Flat Panel

To tilt a flat panel up or down, use one hand to secure the top of the flat panel and use the other hand to pull or push the bottom of the flat panel forward or backwards.

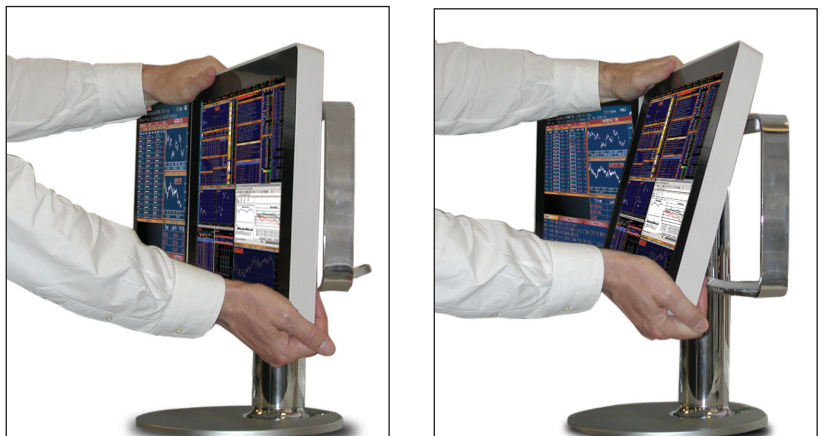



Figure 4: Tilting a Flat Panel

FRANKFURT HONG KONG LONDON NEW YORK SAN FRANCISCO SÃO PAULO SINGAPORE SYDNEY TOKYO
+49 69 9204 1210 +852 2977 6000 +44 20 7330 7500 +1 212 318 2000 +1 415 912 2960 +55 11 3048 4500 +65 6212 1000 +612 9777 8600 +81 3 3201 8900

 Press the <HELP> key twice for instant assistance.


The BLOOMBERG PROFESSIONAL service, BLOOMBERG Data and BLOOMBERG Order Management Systems (the "Services") are owned and distributed locally by Bloomberg Finance L.P. ("BFLP") and its subsidiaries in all jurisdictions other than Argentina, Bermuda, China, India, Japan and Korea (the "BLP Countries"); BFLP is a wholly-owned subsidiary of Bloomberg L.P. ("BLP"). BLP provides BFLP with all global marketing and operational support and service for the Services and distributes the Services either directly or through a non-BFLP subsidiary in the BLP Countries. The Services include electronic trading and order-routing services, which are available only to sophisticated institutional investors and only where the necessary legal clearances have been obtained. BFLP, BLP and their affiliates do not provide investment advice or guarantee the accuracy of prices or information in the Services. Nothing on the Services shall constitute an offering of financial instruments by BFLP, BLP or their affiliates. BLOOMBERG, BLOOMBERG PROFESSIONAL, BLOOMBERG MARKETS, BLOOMBERG NEWS, BLOOMBERG ANYWHERE, BLOOMBERG TRADEBOOK, BLOOMBERG BONDTRADER, BLOOMBERG TELEVISION, BLOOMBERG RADIO, BLOOMBERG PRESS and BLOOMBERG.COM are trademarks and service marks of BFLP, a Delaware limited partnership, or its subsidiaries.

SPECIFICATIONS

Horizontal	Dimension	In.	Cm.
	Height	19.40	49.27
	Width	33.23	84.40
	Depth	11.83	30.04
Weight	Flat Panel	Lbs. 38.5	Kg. 17.4
Booking and Tilting Properties	Adjustment Horizontal – Booking Horizontal – Tilting		Degrees 10° inward, 0° outwards 10° up, 5° down
Display Properties	Dimension	In.	Cm.
	Height	11.85	30.11
	Width	14.82	37.63
	Diagonal	19.0	48.26
	Property	Value	
	Technology	a-Si TFT active matrix	
	Contrast ratio	600:1	
	Luminance	250 CD/m ²	
	Resolution	1280 x 1024 – 16.2 million colors	
	Temperature	F°	C°
	Operating	32°→122°	0°→50°
	Storage	-4°→149°	-20°→65°
	Video Mode	Maximum refresh rate*	
	VGA (640 x 480)	75 Hz	
	SVGA (800 x 600)	75 Hz	
	XGA (1024 x 768)	75 Hz	
	SXGA (1280 x 1024)	75 Hz	
		*recommended refresh setting is 60 Hz	
Power Supply Properties	Property	Value	
	Input	100–250 VAC, 47–63 Hz 3.0A	
	Output	12.0 VDC, 100 W min, 6 Amin	

Note: Energy Efficient power supply with power factor correction.

FRANKFURT +49 69 9204 1210 HONG KONG +852 2977 6000 LONDON +44 20 7330 7500 NEW YORK +1 212 318 2000 SAN FRANCISCO +1 415 912 2960 SÃO PAULO +55 11 3048 4500 SINGAPORE +65 6212 1000 SYDNEY +612 9777 8600 TOKYO +81 3 3201 8900

 Press the <HELP> key twice for instant assistance.

The BLOOMBERG PROFESSIONAL service, BLOOMBERG Data and BLOOMBERG Order Management Systems (the "Services") are owned and distributed locally by Bloomberg Finance L.P. ("BFLP") and its subsidiaries in all jurisdictions other than Argentina, Bermuda, China, India, Japan and Korea (the "BLP Countries"). BFLP is a wholly-owned subsidiary of Bloomberg L.P. ("BLP"). BLP provides BFLP with all global marketing and operational support and service for the Services and distributes the Services either directly or through a non-BFLP subsidiary in the BLP Countries. The Services include electronic trading and order-routing services, which are available only to sophisticated institutional investors and only where the necessary legal clearances have been obtained. BFLP, BLP and their affiliates do not provide investment advice or guarantee the accuracy of prices or information in the Services. Nothing on the Services shall constitute an offering of financial instruments by BFLP, BLP or their affiliates. BLOOMBERG, BLOOMBERG PROFESSIONAL, BLOOMBERG MARKETS, BLOOMBERG NEWS, BLOOMBERG ANYWHERE, BLOOMBERG TRADEBOOK, BLOOMBERG BONDTRADER, BLOOMBERG TELEVISION, BLOOMBERG RADIO, BLOOMBERG PRESS and BLOOMBERG.COM are trademarks and service marks of BFLP, a Delaware limited partnership, or its subsidiaries.

Approvals

This equipment has been tested and found to comply with the limits for a Class B digital device, pursuant to Part 15 of the FCC rules. These limits are designed to provide reasonable protection against harmful interference in a residential installation. This equipment generates, uses, and can radiate radio frequency energy and, if not installed and used in accordance with the instructions, may cause harmful interference to radio communications. However, there is no guarantee that interference will not occur in a particular installation. If this equipment does cause harmful interference to radio or television reception, which can be determined by turning the equipment Off and On, the user is encouraged to try to correct the interference by one or more of the following measures:

- Reorient or relocate the receiving antenna.
- Increase the separation between the equipment and the receiver.
- Connect the equipment into an outlet on a circuit different from that to which the receiver is connected.
- Consult Bloomberg or an experienced radio/TV technician for help.

This Class B digital apparatus meets all requirements of the Canadian interference-Causing Equipment regulations.



DISPOSAL OF WASTE EQUIPMENT BY USERS IN THE EUROPEAN UNION.

This symbol on the product or on its packaging indicates that this product must not be disposed of with your household waste.



Note: As a precaution, Bloomberg recommends placing the power supply under the user's desk, as close as possible to the electrical AC outlet that it is plugged into.


**CONNECTS
TO POWER
SUPPLY**



**CONNECTS TO
DUAL VIDEO
CARD CABLE
CONNECTOR**

The power cord is connected directly to the power supply provided with the 19" Terminal Display (not pictured above). The VGA Cables are connected to the Dual Video Card Cable.

FRANKFURT +49 69 9204 1210 HONG KONG +852 2977 6000 LONDON +44 20 7330 7500 NEW YORK +1 212 318 2000 SAN FRANCISCO +1 415 912 2960 SÃO PAULO +55 11 3048 4500 SINGAPORE +65 6212 1000 SYDNEY +612 9777 8600 TOKYO +81 3 3201 8900

 Press the <HELP> key twice for instant live assistance.

The BLOOMBERG PROFESSIONAL service, BLOOMBERG Data and BLOOMBERG Order Management Systems (the "Services") are owned and distributed locally by Bloomberg Finance L.P. ("BFLP") and its subsidiaries in all jurisdictions other than Argentina, Bermuda, China, India, Japan and Korea (the "BLP Countries"). BFLP is a wholly-owned subsidiary of Bloomberg L.P. ("BLP"). BLP provides BFLP with all global marketing and operational support and service for the Services and distributes the Services either directly or through a non-BLP subsidiary in the BLP Countries. The Services include electronic trading and order-routing services, which are available only to sophisticated institutional investors and only where the necessary legal clearances have been obtained. BFLP, BLP and their affiliates do not provide investment advice or guarantee the accuracy of prices or information in the Services. Nothing on the Services shall constitute an offering of financial instruments by BFLP, BLP or their affiliates. BLOOMBERG, BLOOMBERG PROFESSIONAL, BLOOMBERG MARKETS, BLOOMBERG NEWS, BLOOMBERG ANYWHERE, BLOOMBERG TRADEBOOK, BLOOMBERG BONDTRADER, BLOOMBERG TELEVISION, BLOOMBERG RADIO, BLOOMBERG PRESS and BLOOMBERG.COM are trademarks and service marks of BFLP, a Delaware limited partnership, or its subsidiaries.